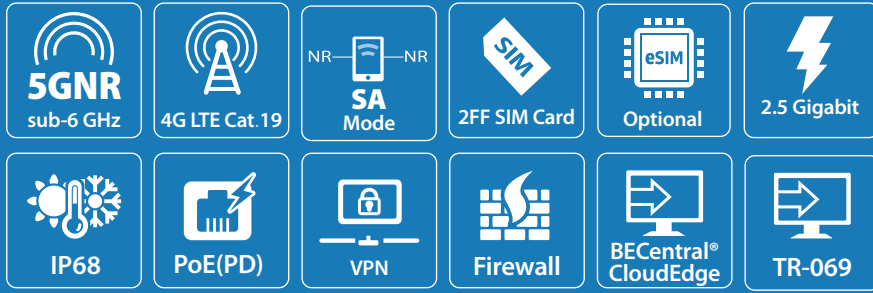


# 8235-JPL

## Local 5G NR High-Capacity Outdoor Router



### Ideal Use Cases

- Fixed Wireless Broadband
- An Alternative Solution for Last Mile Access
- Mission-Critical & Performance Intensive Networks
- Industrial Connectivity Applications
- Suburban and Rural Environments

The 8235-JPL local 5G NR High-Capacity Outdoor Router unlocks diverse fixed wireless access (FWA) market (\* Sub urban area) opportunities and provides subscribers with a broadband experience surpassing your rivals. Designed for performance, the 8235-JPL is 3GPP Release 16 compliant, supporting 5G sub-6 GHz Standalone (SA) mode and CAT 19 LTE connectivity.

Invest in technology innovation from BEC by BILLION that enables the delivery of extreme data speeds, lower latencies, broader coverage, and increased network capacity. Our connectivity solutions are trusted and widely deployed to help customers broaden their service off.



### Redefining Fixed Wireless Access

The 8235-JPL supports 5G Sub-6 GHz standalone access (SA) fully benefiting from all the 5G capabilities up to a gigabit speed to ensure a quick network connection. Flexible deployment to local 5G NR or LTE network.

### Rugged Weatherproof Design

The 8235-JPL is built to last, fully ruggedized with industrial-grade components. Unique to devices are GORE® vents for pressure equalization, humidity, and airflow, thus improving performance reliability and longevity. The enclosure is IP68 rated for protection against dirt, water ingress, and operation in extreme temperatures. Furthermore, enhanced safety lighting/ESD protection ensures years of dependable operation.

### Advanced MIMO Antenna Technology

Operators need antenna technology to meet capacity and throughput demands in challenging deployment scenarios such as Fixed Wireless Access (FWA). The high-gain embedded 4x4 MIMO DL / 2x2 MIMO UL directional antenna ensures increased capacity, maximum bandwidth, and extended coverage.

### BECentral® CloudEdge Services

BECentral® CloudEdge is an Industry-leading cloud-based service platform designed to accelerate LTE and 5G Wireless WAN connectivity for deployments of any scale. The platform enables zero-touch provisioning and provides visual dashboards with realtime analytics, detailed reporting, historical analysis, performance monitoring, proactive alerts/notifications, and API extensibility for 3rd party integration.

### High Performance & Support for 5G NR Network

- **5G NR**  
3GPP Release 16 Compliant  
Carrier Aggregation: 4CA DL / 2CA UL
- **4G/LTE (CAT 19)**  
Carrier Aggregation: 5CA DL / 2CA UL

### Patented Dual-Polarization & Dual Slant Antenna

- Embedded High-Gain 4x4 MIMO DL / 2x2 MIMO UL Antenna
- H-Plane & V-Plane Polarization
- Ensures exceptional RF performance for maximum bandwidth and coverage
- Precise alignment achievable with multi-angle and multi-position pole mount brackets
- High isolation for stable and reliable connectivity

### Designed for Challenging and Rugged Deployments

- IP68 Hardened enclosure for protection against dust and water ingress
- Industrial-grade components for greater reliability
- GORE™ vent for pressure equalization, humidity, and air flow
- Electrostatic Discharge (ESD) & Surge protection
- Wind tunnel tested/rated for successful operation up to 132mph

### Package includes Gigabit PoE injector and Mounting Kit

### Features & Specifications

#### Supported Frequency Band\*1

- **5G NR sub-6 GHz (3GPP Rel-16)**

SA: n41, n77,n78, n79

DL: 4x4 MIMO, UL: 2x2 MIMO

- **4G LTE (CAT 19 DL / CAT 18 UL)**

TDD: B41, B42

#### Network Protocols and Features

- IPv4, IPv6\*2
- Dual APN\*2
- Keep Alive
- NAT, Virtual Server, and DMZ
- Static Routing, Dynamic Routing (RIP-1/2)
- SNTP, DNS relay
- Universal Plug & Play (UPnP)
- Supports DHCP server/ client

#### Firewall

- Built-in NAT firewall
- Stateful Packet Inspection (SPI)
- Prevents DoS attacks including Land Attack, Ping of Death, etc.
- Access Control
- IP Filtering, MAC Filtering
- VPN pass-through

#### Management

- Password protection for system management
- Web-based GUI for remote and local management
- Firmware upgrade and configuration data backup and restore via Web-based GUI
- TR-069(CWMP)\*2, SNMP
- Syslog monitoring
- BECentral® Cloud-Based Remote Management

#### Hardware Specifications

##### Physical Interface

- 2.5Gigabit Ethernet port (w/ 802.3at PoE PD) x1(One)
- Embedded eSIM x1(One Optional)\*2
- 2FF mini-SIM slot x1(One)
- Reset Button x1(One)
- LED Indicators: Power/Boot, LAN(PoE), 5G Signal, Internet
- Grounding connector x1(One)
- Vent x1(One)

##### External Connector

- One(1) Ethernet port: RJ-45
- One(1) SIM slot: 2FF mini-SIM
- One(1) Grounding connector
- One(1) Vent

##### IP Rating

- IP68 grade enclosure

##### Power Requirements

- PoE 802.3at(PD)

##### Physical Specifications

- Dimensions: 321 x 210 x 77.6mm

##### Mounting

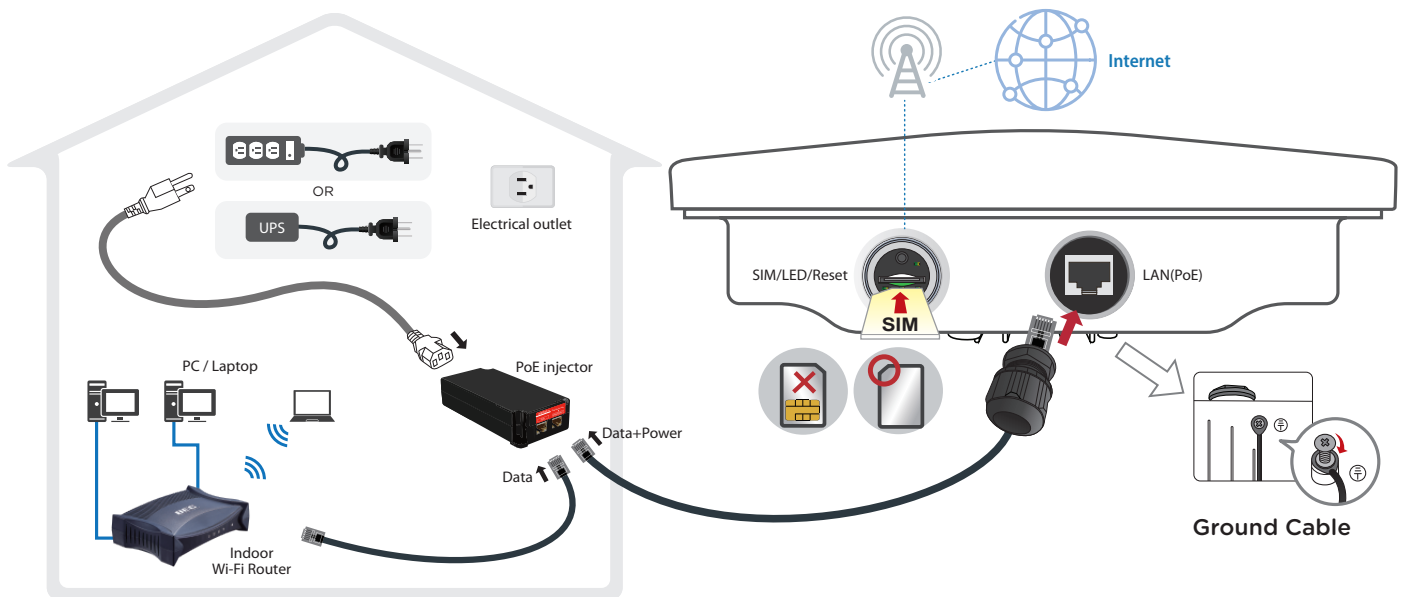
- Pole mount, Wall mount

##### Operating Requirements

- Operating: -40°C to 60°C

##### Surge/ESD Protections

- Surge Protection: K.21 common mode ±6KV
- ESD Protection: IEEE 61000-4-2 Contact: ±8KV / Air: ±15KV



Notes:

1. The 5G NR / 4G LTE is dependent on your local service provider.
2. Only upon request for Telco/ ISP tender projects.
3. Specifications in this datasheet are subject to change without prior notice.